

# D/B BISSO 350

## DIMENSIONS:

|           |                 |
|-----------|-----------------|
| LENGTH    | 75.95 m (250')  |
| WIDTH     | 23.58 m (77.3') |
| DEPTH     | 5.5 m (18')     |
| MIN DRAFT | 1.8 m (5.9')    |
| MAX DRAFT | 3.8 m (12.4')   |

## MOORING:

(4) 1100 m x 44.45 mm (3,600' x 1.75")

Anchors (up to 13 mt)

## CLASSIFICATION:

Lloyds Registry

## FLAG:

Panama

## QUARTERS:

52 Persons (can increase to 76)  
Galley seating 52

## DERRICK:

### PHB

Max Capacity  
@15m

|      |              |                 |
|------|--------------|-----------------|
| MAIN | (Over Stern) | 350 mt (385 st) |
|      | (Revolving)  | 275 mt (302 st) |
| AUX  |              | 150 mt (165 st) |
| WHIP |              | 31 mt (35 st)   |

### Drift @ 15m

(5m from stern)

|             |
|-------------|
| 50 m (164') |
| 50 m (164') |
| 55 m (180') |
| 58 m (190') |

## GENERATORS (ship's power):

875 KVA (700 KW) 380 VAC / 50Hz

## DECK CRANE (available):

MANITOWOC 4000  
Boom 36.5 m (120')

## AIR COMPRESSORS (available):

CFM - 400, 700XHP, 1070XHP, 1600

## AIR TUGGERS (available):

Up to 10K and Man Rated

## JETTING SYSTEMS (available):

Up to 30 m<sup>3</sup>/min @ 80 bar  
(8,100 GPM @ 1,150 PSI)

## ELECTRONICS:

SAT TV, VOICE, FAX & DATA  
RADAR, SSB, VHF, Wx

## FUEL:

150 mt (42,000 gal)

## DIVING (available systems):

Surface air, mixed gas

## WATER:

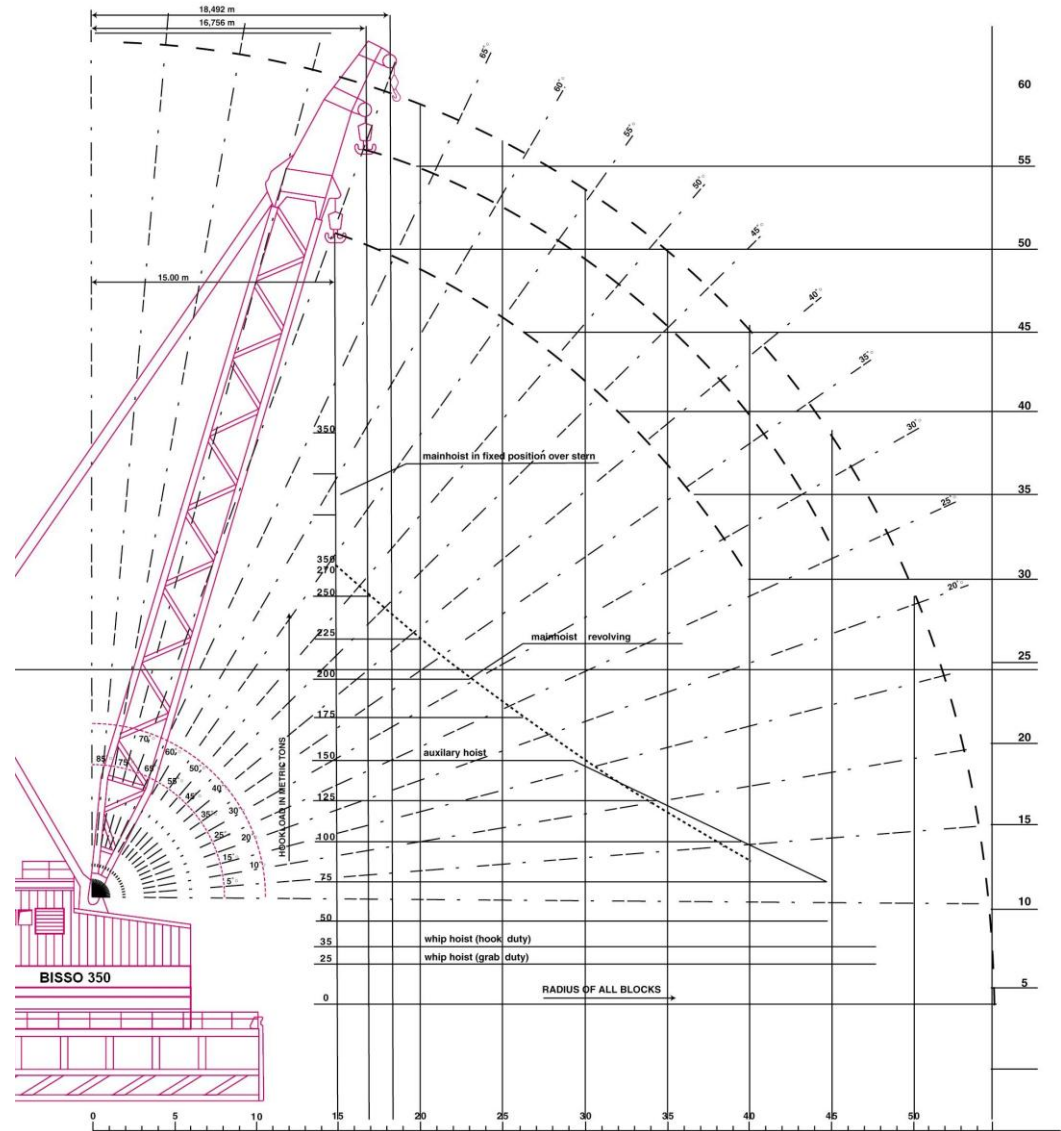
150 mt (42,000 gal)

## BALLAST:

2,495 mt (132,000 gal)

12 man 300 m (1000') Sat

SPECIFICATIONS ARE SUBJECT TO CHANGE WITHOUT NOTICE



## BISSO OFFSHORE CONTRACTORS, PTE LTD

12A JALAN SAMULUN, SINGAPORE 629131

Tel 65 6591 5288 Fax 65 6591 5289

www.bissooffshore.com info@bissooffshore.com

